

*north
Louisiana
fly
fishers*



NOVEMBER 2014

PRESIDENT: Bud Bethea
TREASURER: Tom Bullock
BOARD MEMBERS:

Scott Irwin
Linda Bethea
Frank Harmon
Erik Dilts

COMMITTEE CHAIRS:

MEMBERSHIP: FRANK HARMON
WEBMASTER: FRANK HARMON
SPEAKER: SCOTT IRWIN
BANQUET: OPEN
NEWSLETTER EDITOR: LINDA BETHEA
www.northlaflyfishers.org

P. O. BOX 8542 SHREVEPORT, LA. 71108-8542

It is the charge of the North Louisiana Fly Fishers to afford the general public and its members in particular, a better understanding of Fly Fishing, Fly Tying, and Rod Building. We wish to perpetuate the sport as a most pleasurable and exciting fishing method and provide education, instruction and the opportunities for relaxation to the membership.

NORTH LOUISIANA FLY FISHERS founded in 1984

This Past Month

Our banquet last month turned out very well. I want to thank everyone involved in putting it together and everyone who attended. It could not have happened without you. We will end this year and go into 2015 with a strong financial footing and can take on great programs just like we did this year.

Remember that the annual election for officers and board members is this month. The list of nominees is on page two in this newsletter.

Also it's almost time to renew memberships. Forms are available at our website or you can print them from the newsletter.

Bill Heugel will present his program on fish senses and tie one of his flies for us this month.

Next Meeting:

Nov. 11th, 2014 at the Red River National Wildlife Refuge, 150 Eagle Bend Point, Bossier City, LA. Meeting starts at 7PM. Come about 6 to visit and tie flies. Bring your vise.

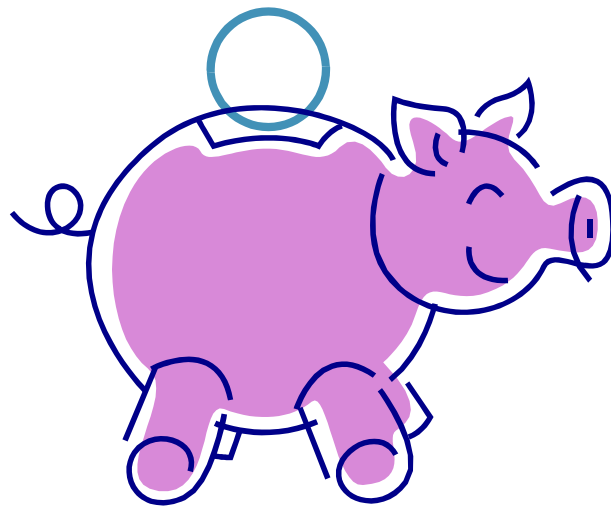
Guest speaker: Bill Heugel

What's Inside:

Page 2: office nominees

Page 3&4: membership forms

Page 5: Up Coming Events



NLFF BANQUET

Thanks to generous donations of our membership and vendors our Annual Fundraising Banquet was a rousing success. All those who attended appeared to be enjoying themselves and most seemed to be coming home with raffle prizes. There were lots of happy faces and good times. Thanks to everyone for their cooperation and support.



We will hold elections for officers and board members at the November meeting

Nominations: Further nominations can be made at meeting

President: Bud Bethea

Treasurer: Tom Bullock

Board: Linda Bethea

Judy Thomas

Joe Dollershell

Rush Clay

Frank Harmon



North Louisiana Fly Fishers

P.O. Box 8542 · Shreveport, LA 71148-8542 · www.northlaflyfishers.org

Club Membership Form

Contact Information

Name/s	
Street Address	
City, State Zip	
Phone Number	
E-Mail Address	

Membership Class

Indicate the annual membership class that you wish to join or renew under:

- | | |
|------------------------|---|
| Family (\$35) | A parent or parents along with their children under 18 years of age. Limited to a two vote maximum.
All individual members are allowed one vote. |
| Individual (\$30) | |
| Student (\$20) | Any student under the age of 18, but not included in a Family Membership. Student members are considered to be full members and have one vote. |
| Active Military (\$20) | Any active member of the U.S. Armed Forces. Active military members are considered to be full members and have one vote. |
| Associate (\$15) | Any non-participating, non-voting member who desires to receive the club newsletter. Associate membership is subject to approval by the Executive Committee. |
| Corporate/Sponsor | Any company or individual who wishes to join the NLFF at a higher level of financial support, while providing opportunities for membership to employees, friends, and/or family members. Three sublevels of membership are available corresponding to the number of individuals under the parent Corporate/ Sponsor membership considered to be full members and having one vote each: <ul style="list-style-type: none">• Gold – four members (\$200)• Silver – three members (\$100)• Bronze – two members (\$50) |

NOTE: Annual dues are payable by the end of January each calendar year. Make checks payable to North Louisiana Fly Fishers (NLFF). Dues for any new member joining on or after July 1 of any year shall be prorated by month from the time he/she joins the club until the end of the year. Additionally, the Annual Club dues for any current member of the FFF will be reduced by \$5.00.

Federation of Fly Fishers Membership

NLFF is an Affiliate Club of the Federation of Fly Fishers, Inc. (FFF). Accordingly, NLFF encourages membership in the FFF, and increased NLFF membership in the FFF reduces costs incurred by the NLFF. Information on FFF membership is available at www.fedflyfishers.org/Membership.aspx. Please note whether you are a current member of the FFF.

____ Yes, I am a _____ (designate class of membership) member of the FFF.

____ No, I am not a member of FFF.

Membership Directory

Please note whether you would like for your name/s and contact information to be included in the NLFF Membership Directory.

____ Yes, I would like to be included in the 2013 NLFF Membership Directory.

____ No, I would prefer not to be included in the 2013 NLFF Membership Directory.

Comments

To assist the Executive Committee in selecting monthly meeting topics, identifying guest speakers, and planning club activities/outings that are responsive to and reflective of the desires of the General Membership, please provide any thoughts, opinions, ideas, etc. that you may have.

UP COMING EVENTS:

November 7th-9th: Redstick Fly Fishers annual Fall Marsh Trip. Hwy 1 corridor. Go to www.fsff.org for details.

Jan. 24, 2015: 1st ever Kisatchie Fly Tying Festival. 8:30 AM till 3:30 PM at the Civic Center, Kees Park, Pineville, LA. Free admission. See www.kisatchiefly.org for details.

Jan. 31, 2015: NLFF annual Frozen Chosen on the Little Missouri River, Murfreesboro, AR. Club will provide hamburgers and hot dogs, bring a side dish and drinks.

February 13th-15th 2015: 10th Annual Little Mo Fly Fishing Festival at the Community Center, Murfreesboro, AR. For more information, go to www.littlemissouriflyfishing.com.



NLFF
P.O. Box 8542
Shreveport, LA 71148



www.northlaflyfishers.org

