

*north  
Louisiana  
fly  
fishers*



**DECEMBER 2014**

PRESIDENT: Bud Bethea  
TREASURER: Tom Bullock  
BOARD MEMBERS:

Scott Irwin      Frank Harmon  
Linda Bethea    Steve Oliver  
Judy Thomas    Rush Clay  
Joe Dollerschell

COMMITTEE CHAIRS:

MEMBERSHIP: FRANK HARMON  
WEBMASTER: FRANK HARMON  
SPEAKER: SCOTT IRWIN  
BANQUET: OPEN  
NEWSLETTER EDITOR: LINDA BETHEA  
[www.northlaflyfishers.org](http://www.northlaflyfishers.org)

P. O. BOX 8542 SHREVEPORT, LA. 71108-8542

It is the charge of the North Louisiana Fly Fishers to afford the general public and its members in particular, a better understanding of Fly Fishing, Fly Tying, and Rod Building. We wish to perpetuate the sport as a most pleasurable and exciting fishing method and provide education, instruction and the opportunities for relaxation to the membership.

## **NORTH LOUISIANA FLY FISHERS founded in 1984**

### **This Past Month**

In November the club elected officers and board members for the coming year. There is a list of the elected, along with contact information in this newsletter. We also approved a kayak to raffle. The tickets will go on sale at the December meeting and the raffle will be held in April. Steve will have the kayak on display at the December meeting also. Come on out to admire it. Tickets will go fast, so don't take too long to think about getting some. If you want to know the odds involved, the cut off for tickets is set at 200. Tickets are \$25.00 each.

In keeping with the season, we would like to wish you a Merry Christmas, and a happy New Year. May the coming year bring you health and happiness.

### **Next Meeting:**

**Dec.9th, 2014 at the Red River National Wildlife Refuge, 150 Eagle Bend Point, Bossier City, LA. Meeting starts at 7PM. Come about 6 to visit and tie flies. Bring your vise.**

**Speaker: David Ellzey**

### **What's Inside:**

Page 2-3: Article on David Ellzey

Page 4: Workshops and notices

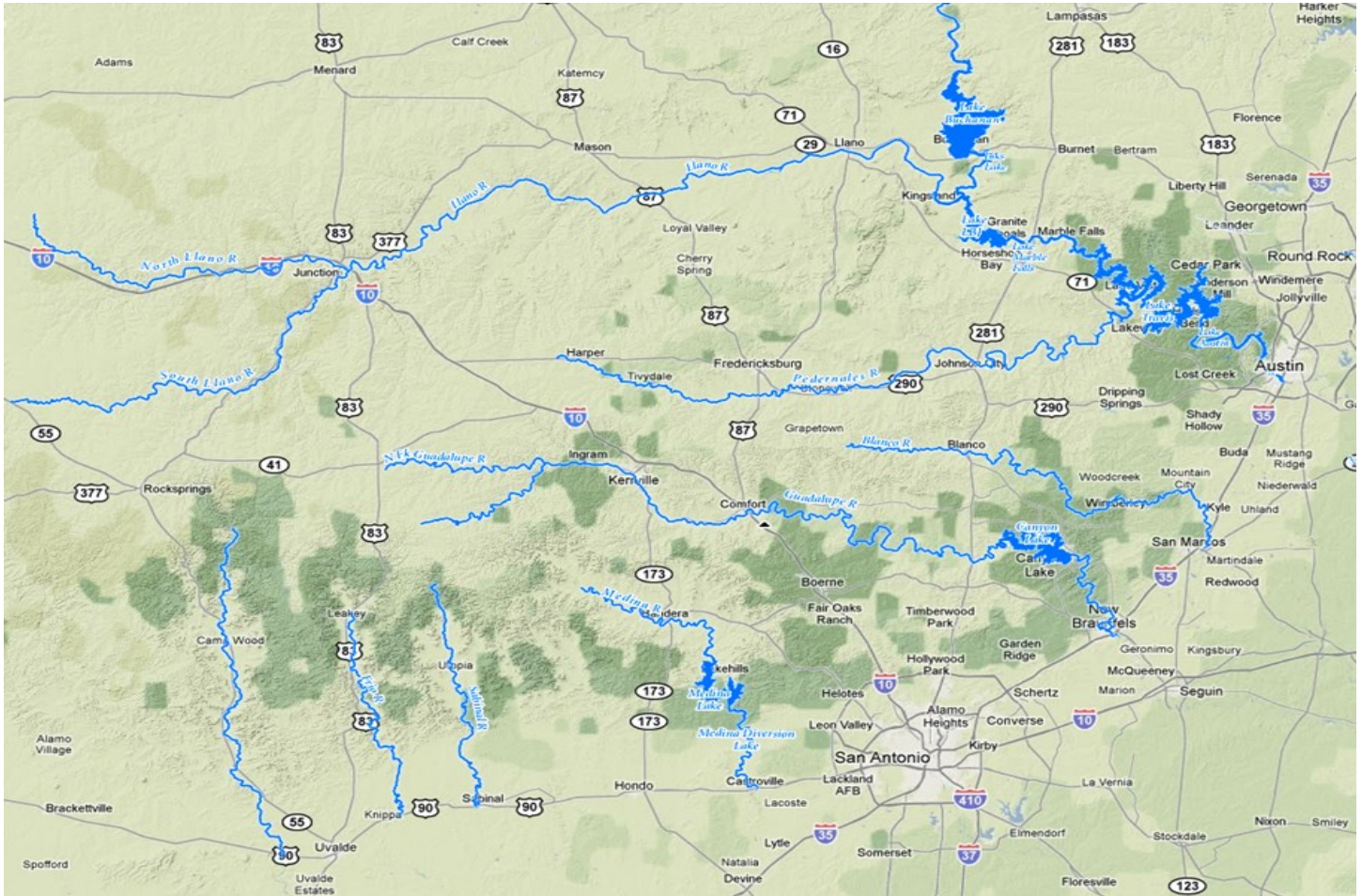
Page 5-6: membership forms

Page 7: Officers and contact information

Page 8: Upcoming Events

Learn about the Texas river systems

## *The Texas River Bum to speak*



### **David Ellzey – The Texas River Bum**

Born in San Antonio and raised in Fort Worth, Dave settled in southern California after his military service to pursue a career as a digital artist. He had been living there as a Texas expatriate for the last 20 years until his return to Texas in July of 2010. He brought his family to Austin, partially due to the friendly business climate here but also to be close to the beautiful Texas Hill Country that he remembered from his youth.

In California, the mountain trails throughout the Sierra Nevada range had been his obsession, here in Texas he knew it would be the Hill Country Rivers that would be his new passion. Being a bit of a research fanatic he loved planning adventures almost as much as going on them. So it was no surprise that as soon as they were unpacked he began studying the rivers. He found it frustrating how little information there was to be found online, or at least in any organized locations. Over the following months while making multitudes of exploratory trips to get first hand knowledge it occurred to him that he should create an online magazine where all of the information that he was accumulating could be offered to anyone with the desire to experience these beautiful rivers but needed guidance.

*David has created numerous pocket guide books for most of the rivers in Texas. They detail where to launch, take out, points of interest and length of trips. Place to fish, equipment and flies to use will also be a topic of discussion.*

*He will speak at the December 9<sup>th</sup> meeting of the North Louisiana Fly Fishers. A reception will take place from 6 to 7 p.m. with the presentation beginning at 7 p.m.. Presentation will be in the Conservation Conference Center of the Red River Wildlife Refuge, 150 Eagle bend point, Bossier City, LA 71112. For More information, contact Scott Irwin: 318-469-0854*



*David Ellzey: AKA The Texas River Bum*



### **Time to renew memberships**

The new year is just around the corner and it's time to renew memberships for next year. Membership forms are included in this newsletter or you can go to our webpage and click on the link to the forms and print them out. There will also be forms available at the meetings for you if you prefer to get them there. See you at the December meeting.

Upcoming workshops at Bass Pro:

December: Don Lawler will instruct us on tying the Red Ass. This fly is a favorite on many rivers especially the Little Red River.

January: Joe Dollerschell will teach the Sow Bug. This fly is also one of those patterns that is a must have for river fishing.

February: Tom Bullock will teach us the Sonic Boom. Bring your ear plugs.

March: Bud Bethea will demonstrate a braided body fly. The Tusselbug. Great for blue gills and almost anything else in the general vicinity.

Frozen Chosen:

Don't forget that our annual outing to the Little Missouri is set for the last Saturday in January, the 31st. The club will provide hamburgers and hot dogs, bring a side dish and drinks.

Movie night: On February 28th the club will sponsor a special event. To be precise, a pot luck dinner and a movie. This event will take place at the Red River National Wildlife Refuge, dinner will start at 6 PM with the movie following.

See you at the meeting Tuesday Dec. 9th.





## North Louisiana Fly Fishers

P.O. Box 8542 · Shreveport, LA 71148-8542 · [www.northlaflyfishers.org](http://www.northlaflyfishers.org)

### Club Membership Form

#### Contact Information

Name/s	
Street Address	
City, State Zip	
Phone Number	
E-Mail Address	

#### Membership Class

Indicate the annual membership class that you wish to join or renew under:

- |                        |   |
|------------------------|---|
| Family (\$35)          | A parent or parents along with their children under 18 years of age. Limited to a two vote maximum.<br>All individual members are allowed one vote.   |
| Individual (\$30)      |   |
| Student (\$20)         | Any student under the age of 18, but not included in a Family Membership. Student members are considered to be full members and have one vote.  |
| Active Military (\$20) | Any active member of the U.S. Armed Forces. Active military members are considered to be full members and have one vote.  |
| Associate (\$15)       | Any non-participating, non-voting member who desires to receive the club newsletter. Associate membership is subject to approval by the Executive Committee.  |
| Corporate/Sponsor      | Any company or individual who wishes to join the NLFF at a higher level of financial support, while providing opportunities for membership to employees, friends, and/or family members. Three sublevels of membership are available corresponding to the number of individuals under the parent Corporate/ Sponsor membership considered to be full members and having one vote each: <ul style="list-style-type: none"><li>• Gold – four members (\$200)</li><li>• Silver – three members (\$100)</li><li>• Bronze – two members (\$50)</li></ul> |

NOTE: Annual dues are payable by the end of January each calendar year. Make checks payable to North Louisiana Fly Fishers (NLFF). Dues for any new member joining on or after July 1 of any year shall be prorated by month from the time he/she joins the club until the end of the year. Additionally, the Annual Club dues for any current member of the FFF will be reduced by \$5.00.

### **Federation of Fly Fishers Membership**

NLFF is an Affiliate Club of the Federation of Fly Fishers, Inc. (FFF). Accordingly, NLFF encourages membership in the FFF, and increased NLFF membership in the FFF reduces costs incurred by the NLFF. Information on FFF membership is available at [www.fedflyfishers.org/Membership.aspx](http://www.fedflyfishers.org/Membership.aspx). Please note whether you are a current member of the FFF.

\_\_\_\_ Yes, I am a \_\_\_\_\_ (designate class of membership) member of the FFF.

\_\_\_\_ No, I am not a member of FFF.

### **Membership Directory**

Please note whether you would like for your name/s and contact information to be included in the NLFF Membership Directory.

\_\_\_\_ Yes, I would like to be included in the 2013 NLFF Membership Directory.

\_\_\_\_ No, I would prefer not to be included in the 2013 NLFF Membership Directory.

### **Comments**

To assist the Executive Committee in selecting monthly meeting topics, identifying guest speakers, and planning club activities/outings that are responsive to and reflective of the desires of the General Membership, please provide any thoughts, opinions, ideas, etc. that you may have.

## Contact Information

The Officers and Board Members for the year 2015 are:

President: Thomas (Bud) Bethea   thomasbethea@hotmail.com   318-464-5104

Treasurer: Thomas Bullock   twbullock@aol.com   318-393-7729

Board Members:

Frank Harmon   qualey99@mac.com   318-470-2646

Scott Irwin   scottpeggy2004@gmail.com   318-469-0854

Linda Bethea   lbeth1950@hotmail.com   318-423-6821

Steve Oliver   sdoliver012@gmail.com   318-349-6411

Judy Thomas   jmt1216@bellsouth.net   318-746-1219

Rush Clay   mrclaymar@gmail.com   318-519-5679

Joe Dollerschell   DollerschellCJ@cdmsmith.com   501-251-7664

Send pictures to post on the website to Frank Harmon.

## UPCOMMING EVENTS:

January 23-25, 2015: Red River Rendezvous. This year the event will be at a new venue, Beavers Bend State Park in Broken Bow, OK. go to [www.rrff.org](http://www.rrff.org) for details.

January 31st: NLFF Annual Frozen Chosen outing at the Little Missouri River in Murfreesboro, AR. Make plans now or you might not get to freeze to death this winter. The club will provide hamburgers and hot dogs, bring your favorite sides and drinks.

February 13th-15th: Little Mo Fly Fishing Festival at the Community Center in Murfreesboro, AR. See [www.littlemissouriflyfishing.com/ff-festival.html](http://www.littlemissouriflyfishing.com/ff-festival.html) for details.



NLFF

P.O. Box 8542

Shreveport, LA 71148



[www.northlaflyfishers.org](http://www.northlaflyfishers.org)

